

ISTITUTO AUTONOMO PER LE CASE POPOLARI DELLA PROVINCIA DI FOGGIA

PROGRAMMA DI RIQUALIFICAZIONE URBANA "RIMODULATO" COMUNE DI FOGGIA UBICAZIONE: ZONA CROCI NORD - VIA LUCERA EDILIZIA RESIDENZIALE PUBBLICA SECONDO STRALCIO FUNZIONALE

Progetto: Ing. Matteo Torre
Ing. Emilio Sacco

Calcolo Statico: Ing. Aframo Cristalli

Collaboratore: Geom. Salvatore Rubino

ELABORATO N°	SCALA	Il Responsabile del Procedimento
E S a.09	1/50	PE

PROGETTO ESECUTIVO RELATIVO AI LOTTI 5-6

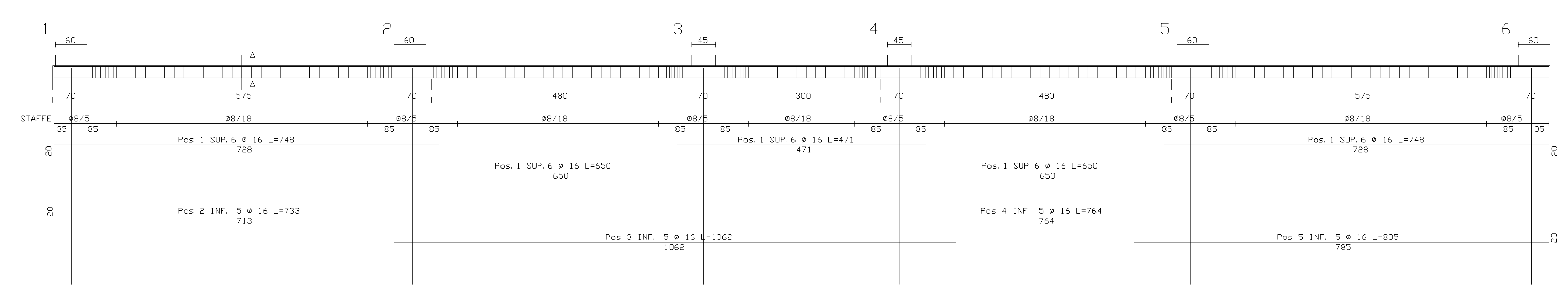
integrazioni nota 0018545/11

TRAVI PIANO TERRA

DATA	MORE FEE
7.06.2011	

ELABORATO N°	SCALA	Il Responsabile del Procedimento
E S a.09	1/50	PE

Impalcato piano interrato01 (1-2-3-4-5-6)

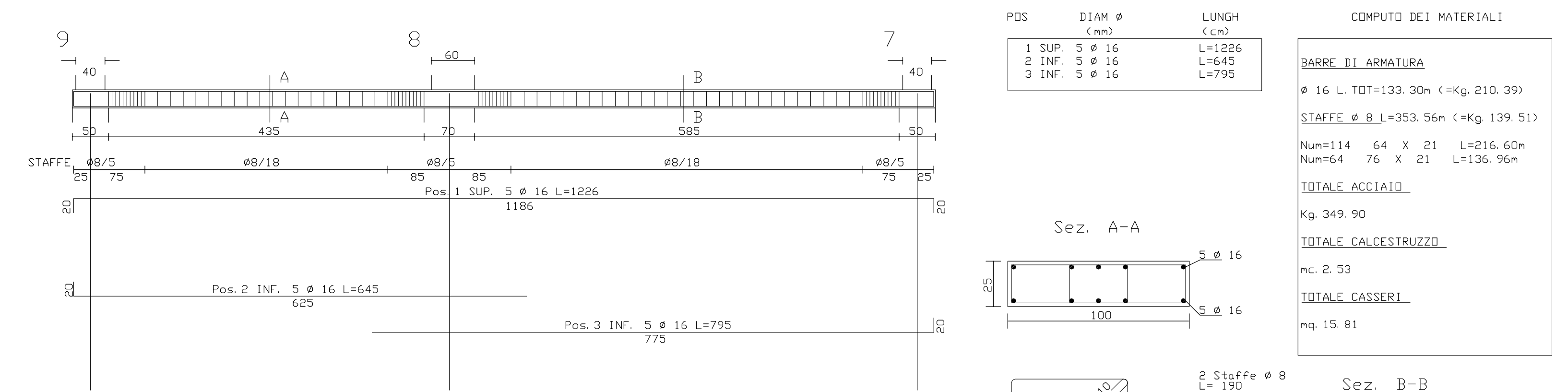


COMPUTO DEI MATERIALI

POS.	DIAM. #	LUNGH. (cm)
1 SUP. 6 # 16	L=1086	
2 INF. 5 # 16	L=1086	
3 INF. 5 # 16	L=1086	
4 INF. 5 # 16	L=1086	
5 INF. 5 # 16	L=1086	

POS.	DIAM. #	LUNGH. (cm)
1 SUP. 6 # 16	L=1086	
2 INF. 5 # 16	L=1086	
3 INF. 5 # 16	L=1086	
4 INF. 5 # 16	L=1086	
5 INF. 5 # 16	L=1086	

Impalcato piano interrato02 (9-8-7)

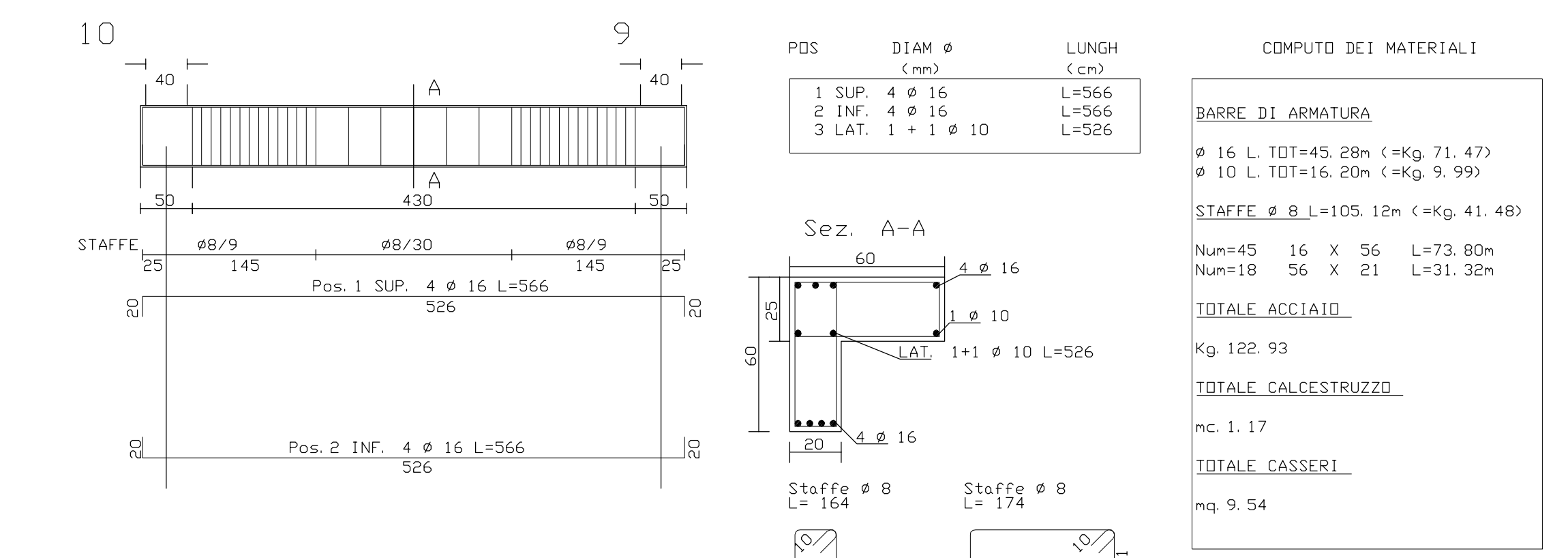


COMPUTO DEI MATERIALI

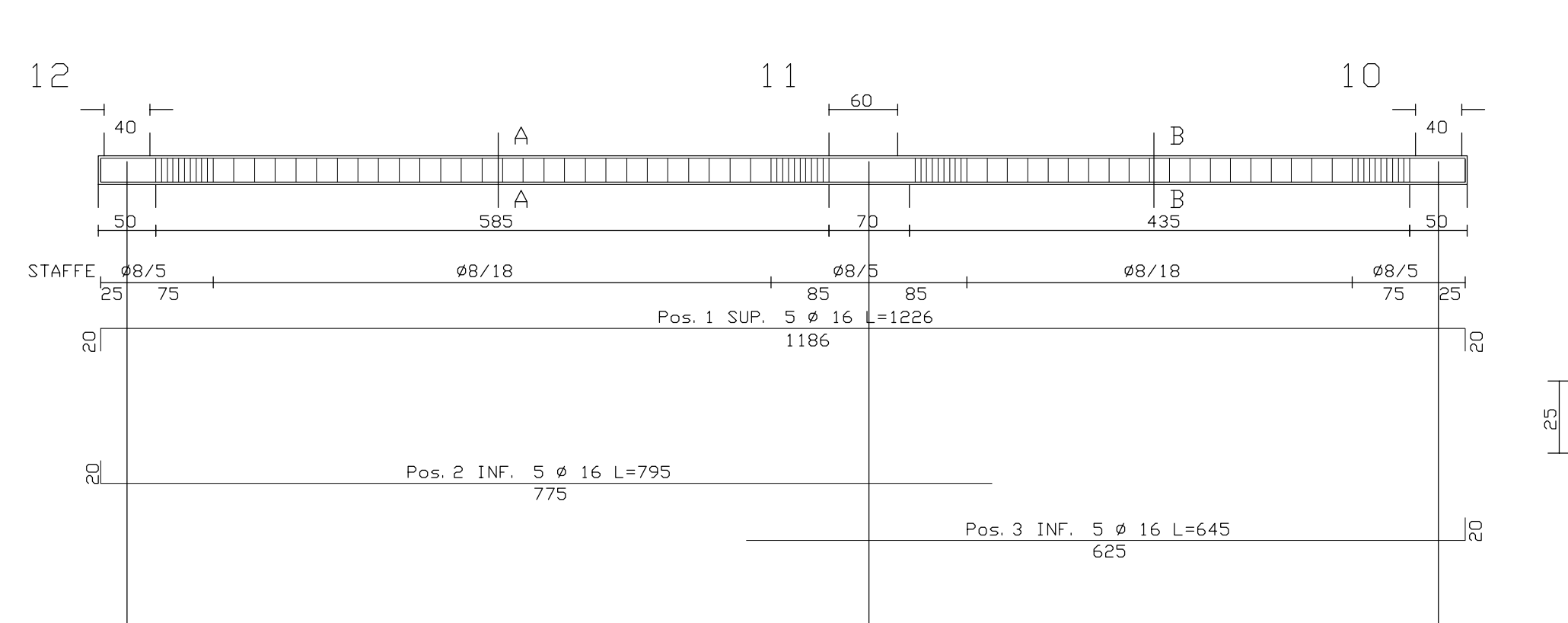
POS.	DIAM. #	LUNGH. (cm)
1 SUP. 6 # 16	L=1086	
2 INF. 5 # 16	L=1086	
3 INF. 5 # 16	L=1086	
4 INF. 5 # 16	L=1086	
5 INF. 5 # 16	L=1086	

POS.	DIAM. #	LUNGH. (cm)
1 SUP. 6 # 16	L=1086	
2 INF. 5 # 16	L=1086	
3 INF. 5 # 16	L=1086	
4 INF. 5 # 16	L=1086	
5 INF. 5 # 16	L=1086	

Impalcato piano interrato19 (10-9)



Impalcato piano interrato03 (12-11-10)

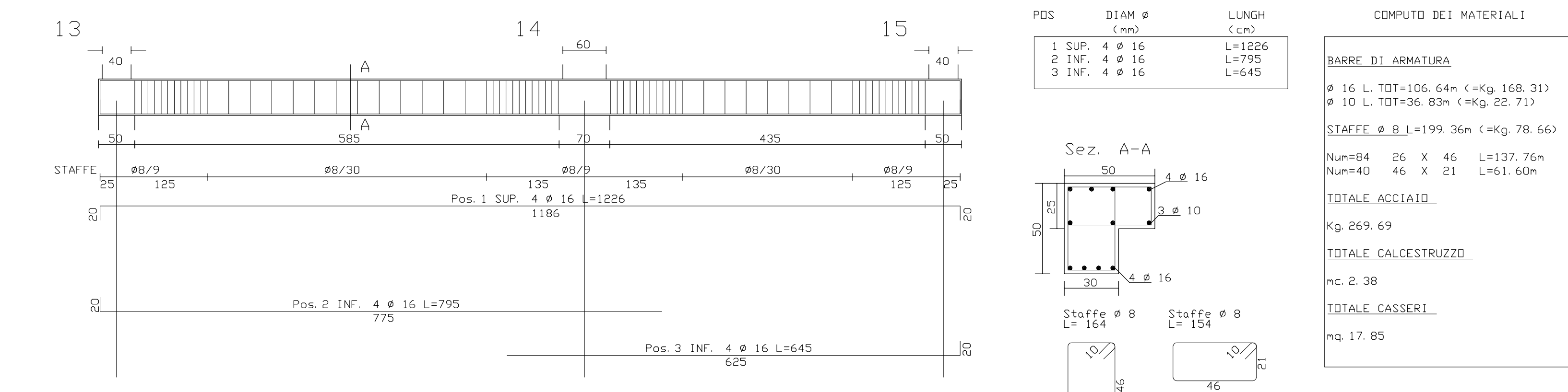


COMPUTO DEI MATERIALI

POS.	DIAM. #	LUNGH. (cm)
1 SUP. 6 # 16	L=1086	
2 INF. 5 # 16	L=1086	
3 INF. 5 # 16	L=1086	
4 INF. 5 # 16	L=1086	
5 INF. 5 # 16	L=1086	

POS.	DIAM. #	LUNGH. (cm)
1 SUP. 6 # 16	L=1086	
2 INF. 5 # 16	L=1086	
3 INF. 5 # 16	L=1086	
4 INF. 5 # 16	L=1086	
5 INF. 5 # 16	L=1086	

Impalcato piano interrato04 (13-14-15)

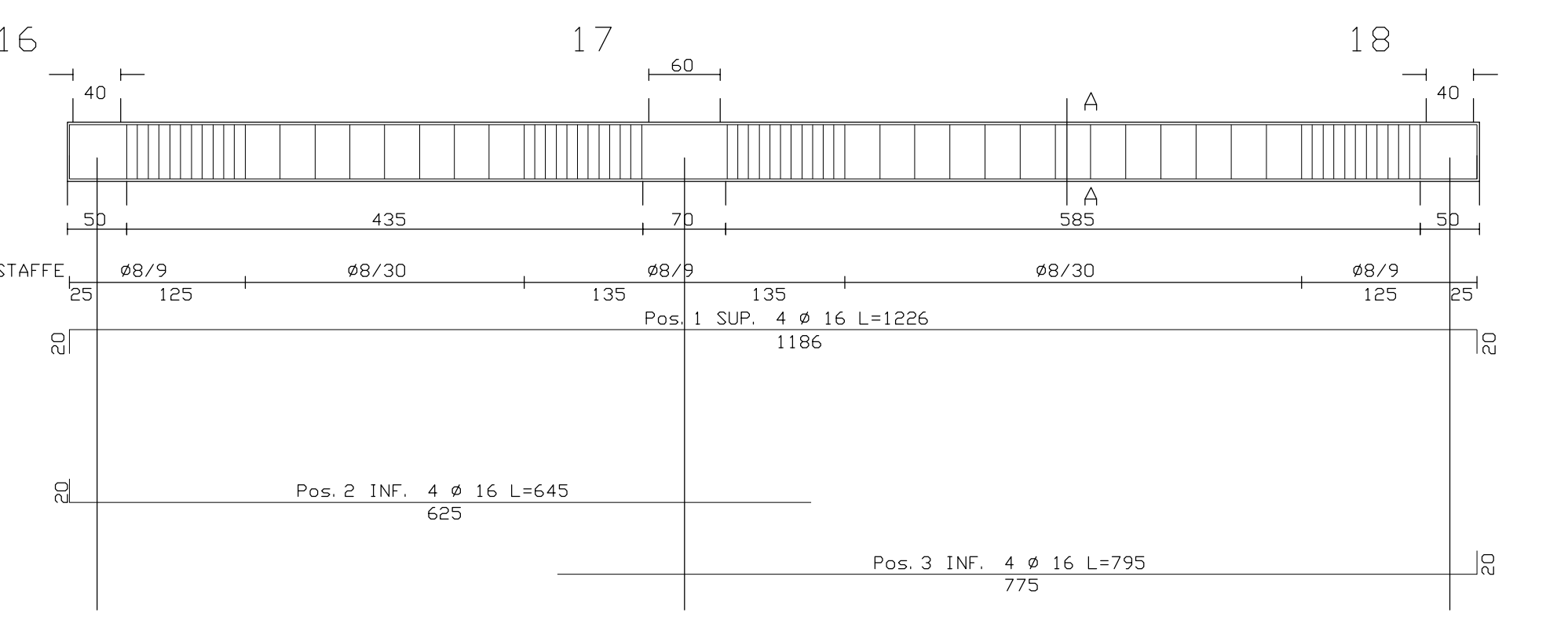


COMPUTO DEI MATERIALI

POS.	DIAM. #	LUNGH. (cm)
1 SUP. 6 # 16	L=1086	
2 INF. 5 # 16	L=1086	
3 INF. 5 # 16	L=1086	
4 INF. 5 # 16	L=1086	
5 INF. 5 # 16	L=1086	

POS.	DIAM. #	LUNGH. (cm)
1 SUP. 6 # 16	L=1086	
2 INF. 5 # 16	L=1086	
3 INF. 5 # 16	L=1086	
4 INF. 5 # 16	L=1086	
5 INF. 5 # 16	L=1086	

Impalcato piano interrato05 (16-17-18)

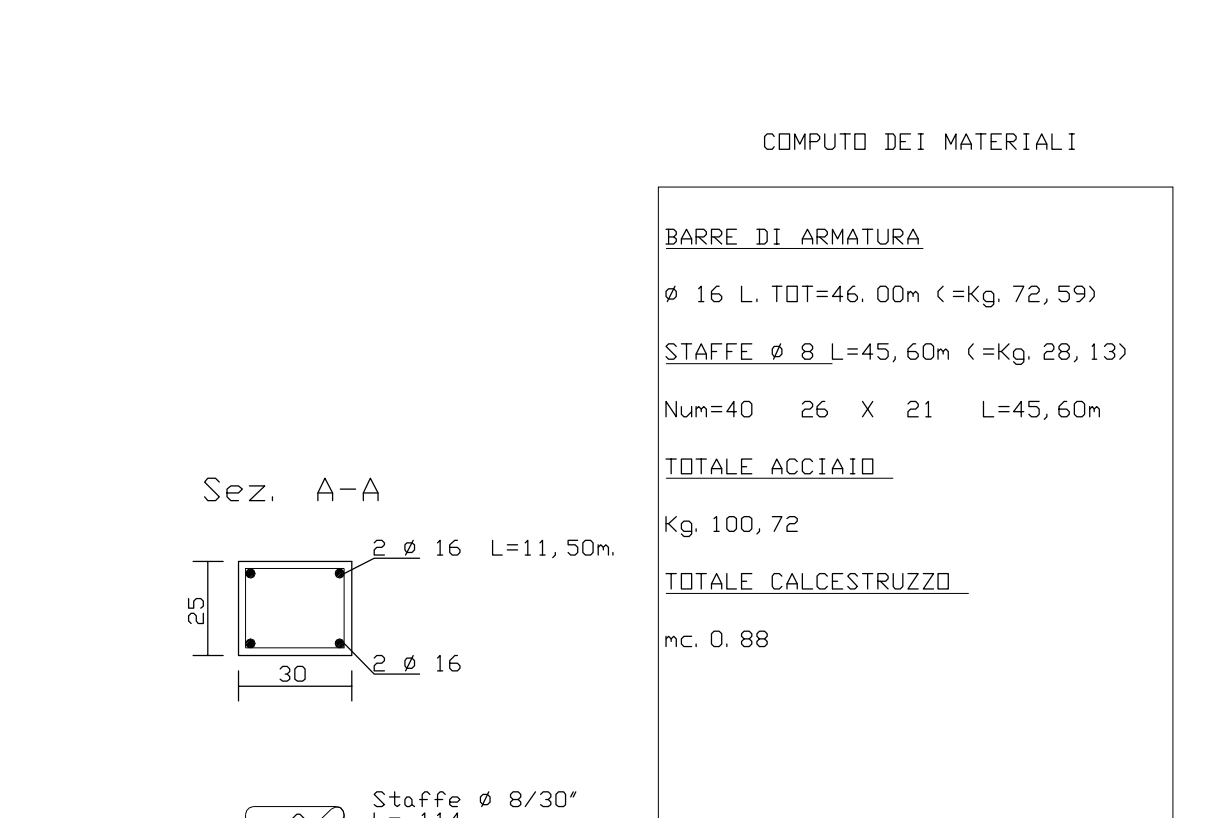


COMPUTO DEI MATERIALI

POS.	DIAM. #	LUNGH. (cm)
1 SUP. 6 # 16	L=1086	
2 INF. 5 # 16	L=1086	
3 INF. 5 # 16	L=1086	
4 INF. 5 # 16	L=1086	
5 INF. 5 # 16	L=1086	

POS.	DIAM. #	LUNGH. (cm)
1 SUP. 6 # 16	L=1086	
2 INF. 5 # 16	L=1086	
3 INF. 5 # 16	L=1086	
4 INF. 5 # 16	L=1086	
5 INF. 5 # 16	L=1086	

Impalcato piano interrato06 (19-20-21)

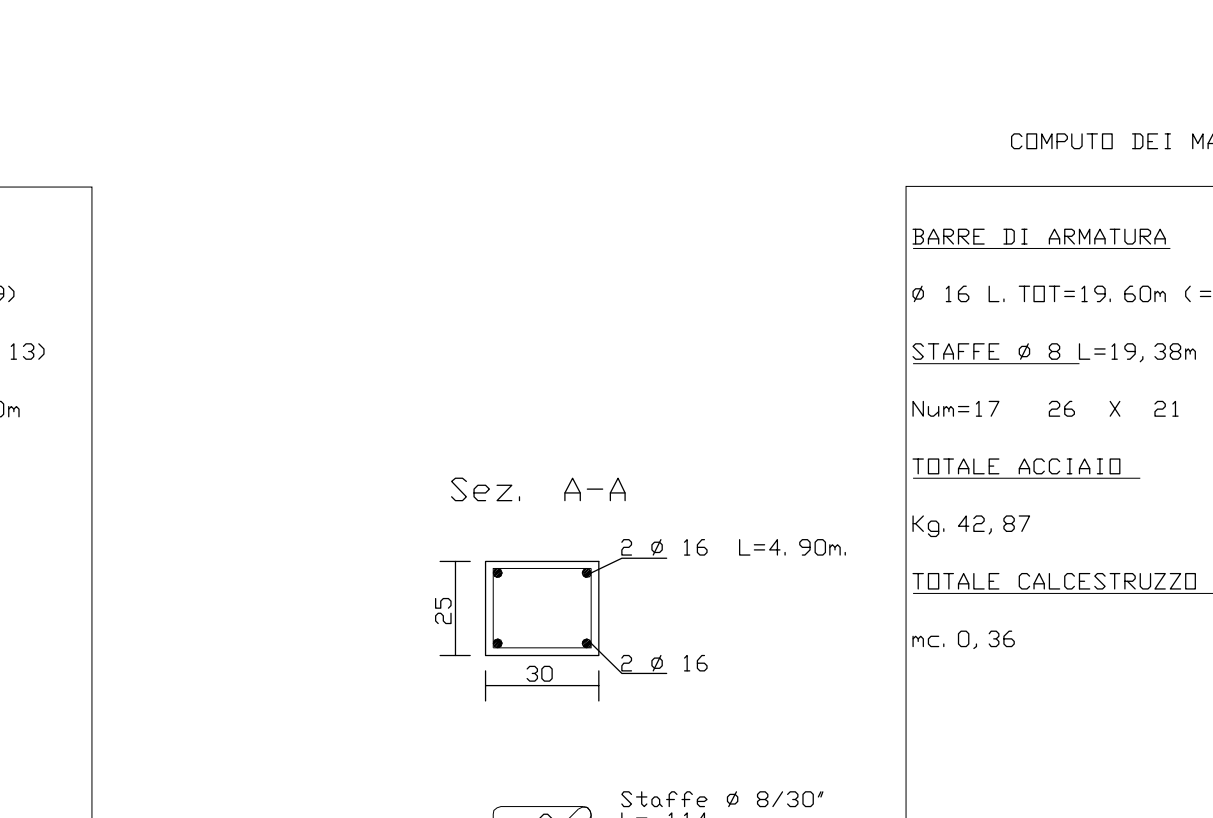


COMPUTO DEI MATERIALI

POS.	DIAM. #	LUNGH. (cm)
1 SUP. 6 # 16	L=1086	
2 INF. 5 # 16	L=1086	
3 INF. 5 # 16	L=1086	
4 INF. 5 # 16	L=1086	
5 INF. 5 # 16	L=1086	

POS.	DIAM. #	LUNGH. (cm)
1 SUP. 6 # 16	L=1086	
2 INF. 5 # 16	L=1086	
3 INF. 5 # 16	L=1086	
4 INF. 5 # 16	L=1086	
5 INF. 5 # 16	L=1086	

Impalcato piano interrato06 (23-25-26)

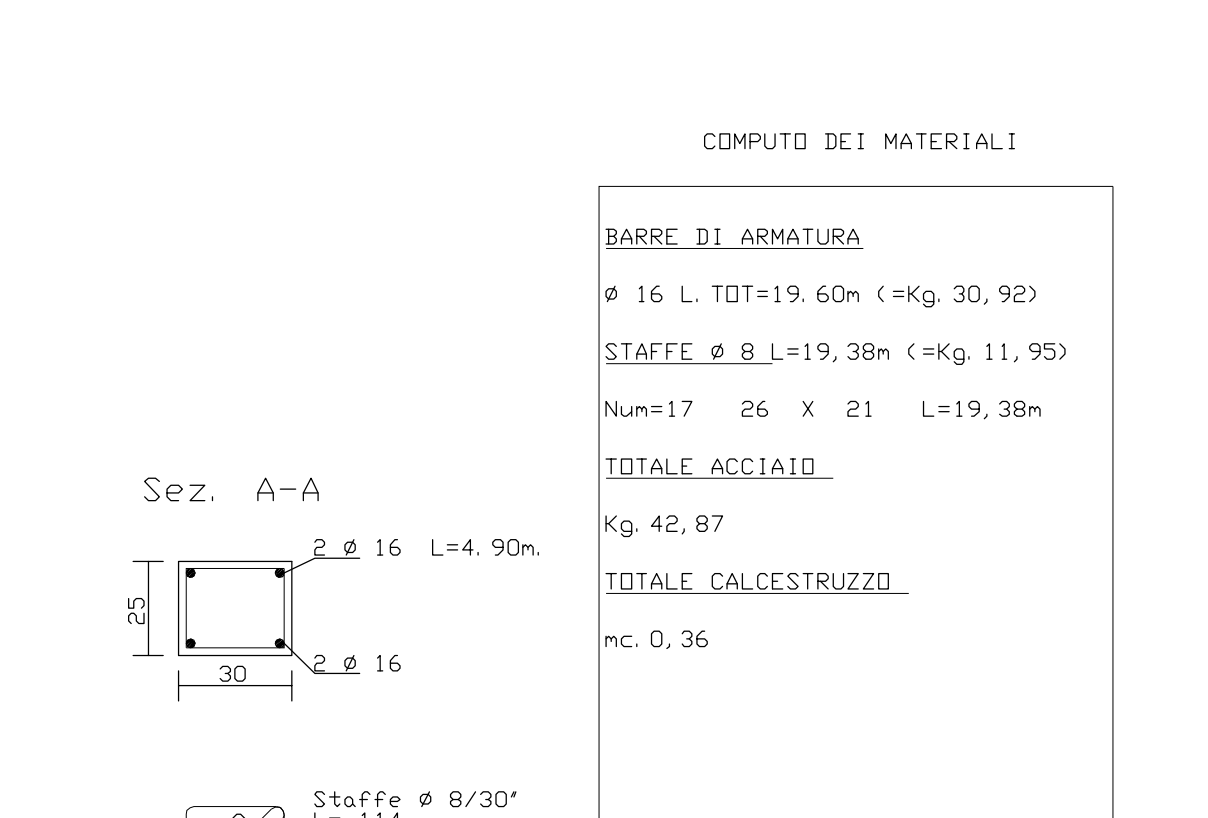


COMPUTO DEI MATERIALI

POS.	DIAM. #	LUNGH. (cm)
1 SUP. 6 # 16	L=1086	
2 INF. 5 # 16	L=1086	
3 INF. 5 # 16	L=1086	
4 INF. 5 # 16	L=1086	
5 INF. 5 # 16	L=1086	

POS.	DIAM. #	LUNGH. (cm)
1 SUP. 6 # 16	L=1086	
2 INF. 5 # 16	L=1086	
3 INF. 5 # 16	L=1086	
4 INF. 5 # 16	L=1086	
5 INF. 5 # 16	L=1086	

Impalcato piano interrato07 (22-24)

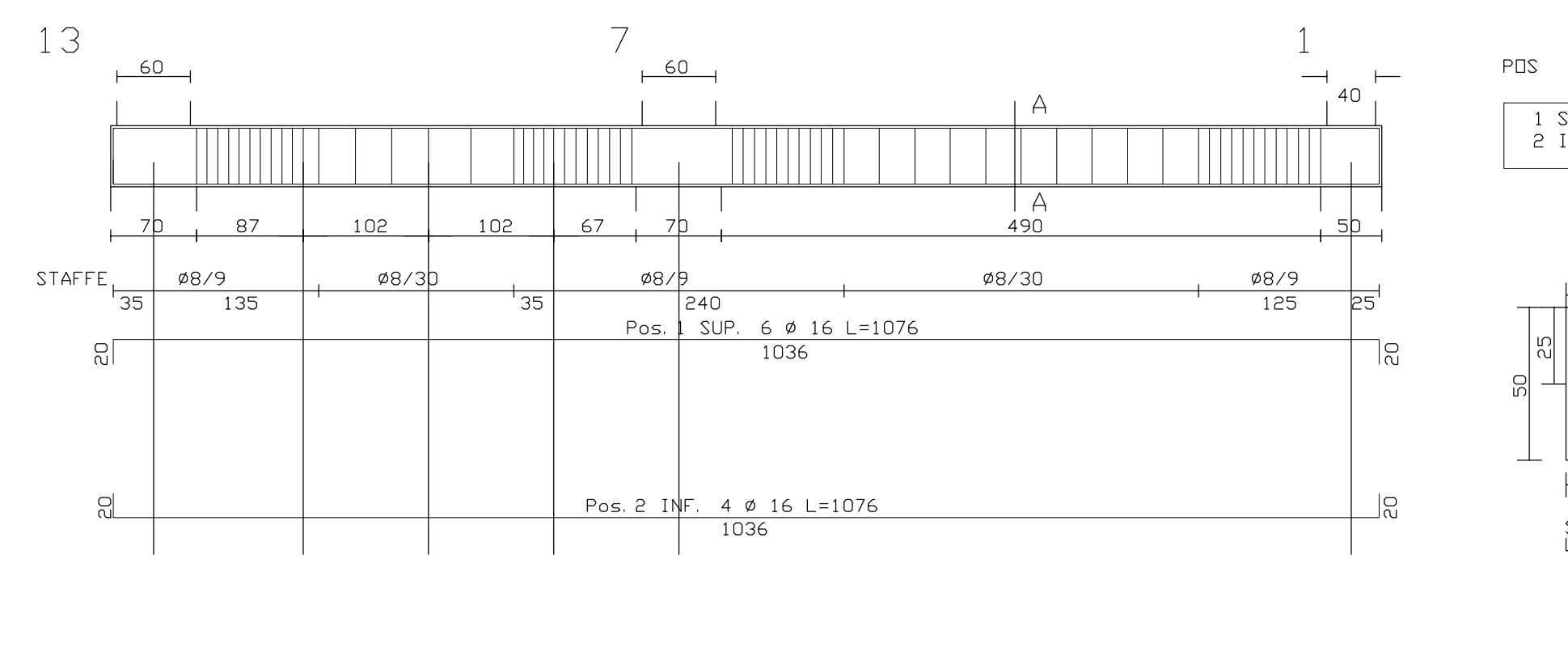


COMPUTO DEI MATERIALI

POS.	DIAM. #	LUNGH. (cm)
1 SUP. 6 # 16	L=1086	
2 INF. 5 # 16	L=1086	
3 INF. 5 # 16	L=1086	
4 INF. 5 # 16	L=1086	
5 INF. 5 # 16	L=1086	

POS.	DIAM. #	LUNGH. (cm)
1 SUP. 6 # 16	L=1086	
2 INF. 5 # 16	L=1086	
3 INF. 5 # 16	L=1086	
4 INF. 5 # 16	L=1086	
5 INF. 5 # 16	L=1086	

Impalcato piano interrato06 (13-7-1)

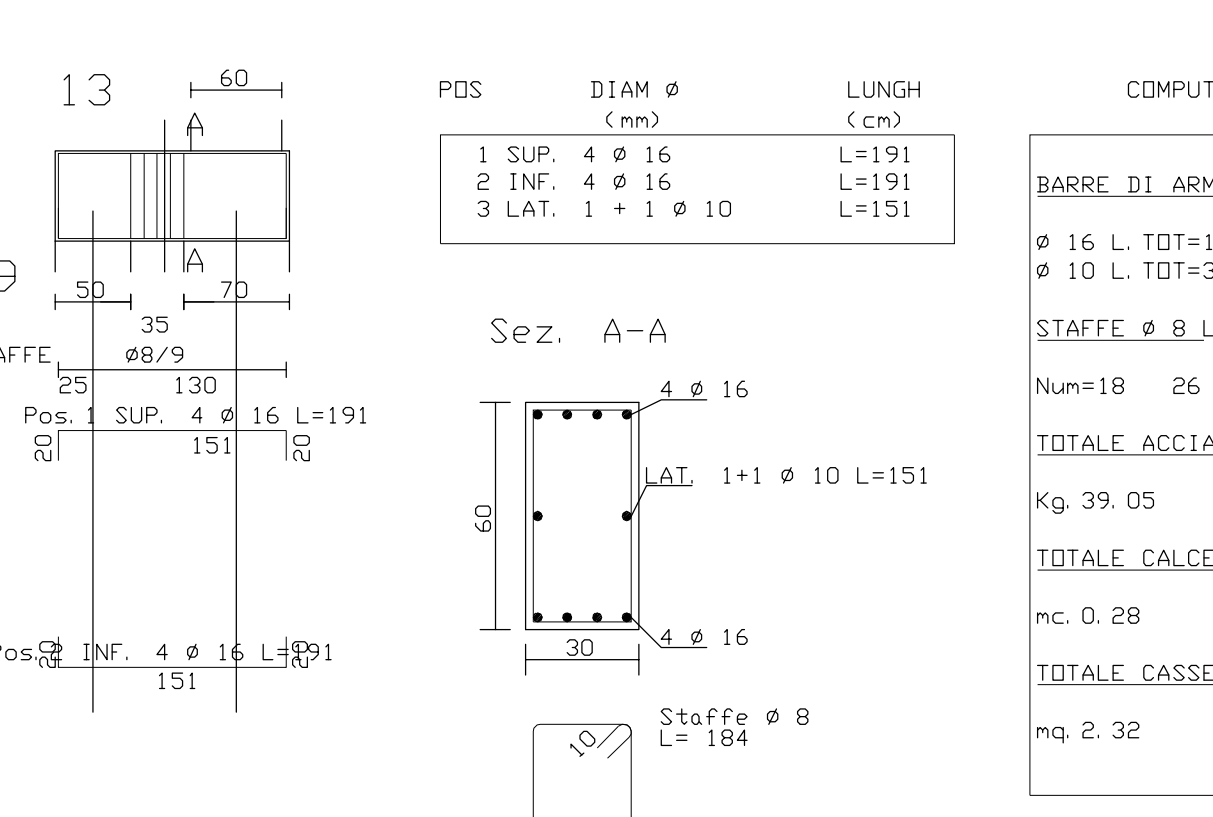


COMPUTO DEI MATERIALI

POS.	DIAM. #	LUNGH. (cm)
1 SUP. 6 # 16	L=1086	
2 INF. 5 # 16	L=1086	
3 INF. 5 # 16	L=1086	
4 INF. 5 # 16	L=1086	
5 INF. 5 # 16	L=1086	

POS.	DIAM. #	LUNGH. (cm)
1 SUP. 6 # 16	L=1086	
2 INF. 5 # 16	L=1086	
3 INF. 5 # 16	L=1086	
4 INF. 5 # 16	L=1086	
5 INF. 5 # 16	L=1086	

Impalcato piano interrato13 (19-13)

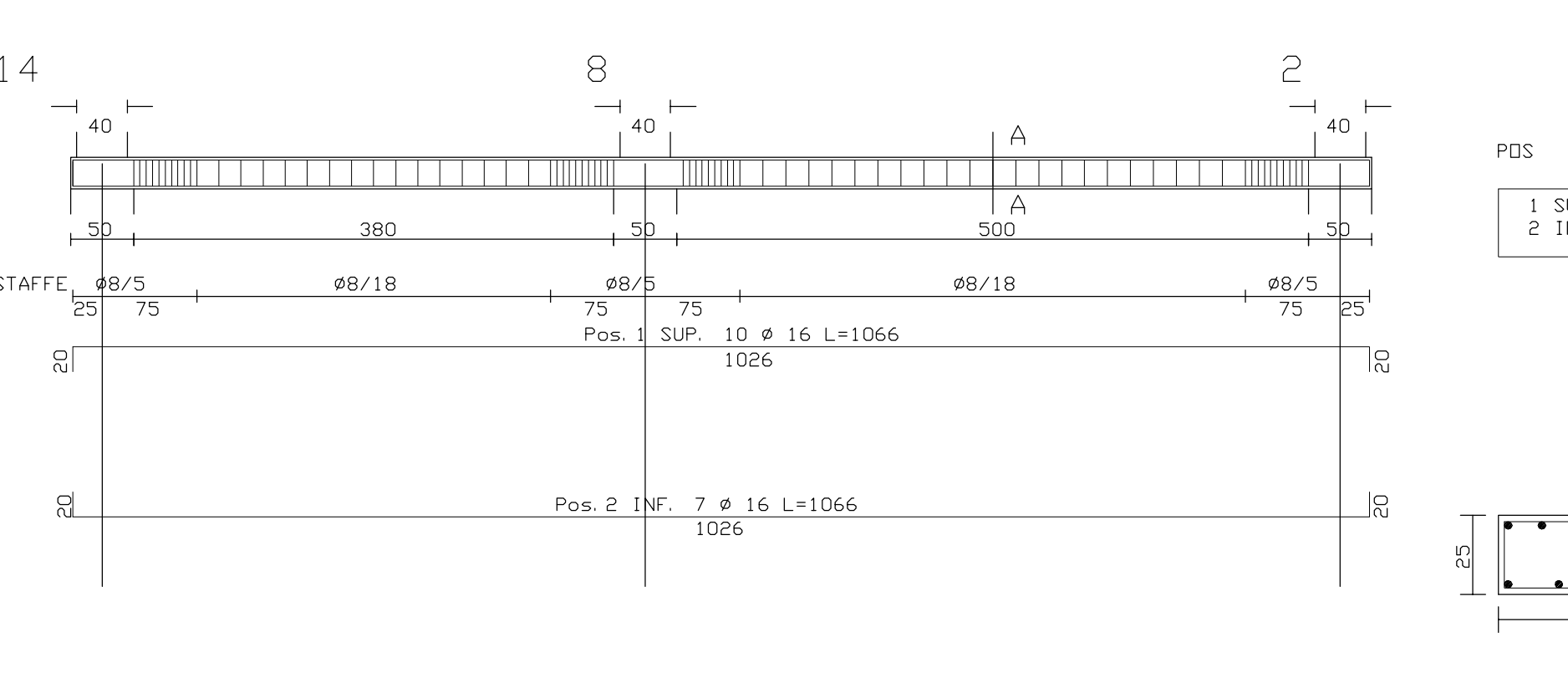


COMPUTO DEI MATERIALI

POS.	DIAM. #	LUNGH. (cm)
1 SUP. 6 # 16	L=1086	
2 INF. 5 # 16	L=1086	
3 INF. 5 # 16	L=1086	
4 INF. 5 # 16	L=1086	
5 INF. 5 # 16	L=1086	

POS.	DIAM. #	LUNGH. (cm)
1 SUP. 6 # 16	L=1086	
2 INF. 5 # 16	L=1086	
3 INF. 5 # 16	L=1086	
4 INF. 5 # 16	L=1086	
5 INF. 5 # 16	L=1086	

Impalcato piano interrato07 (14-8-2)

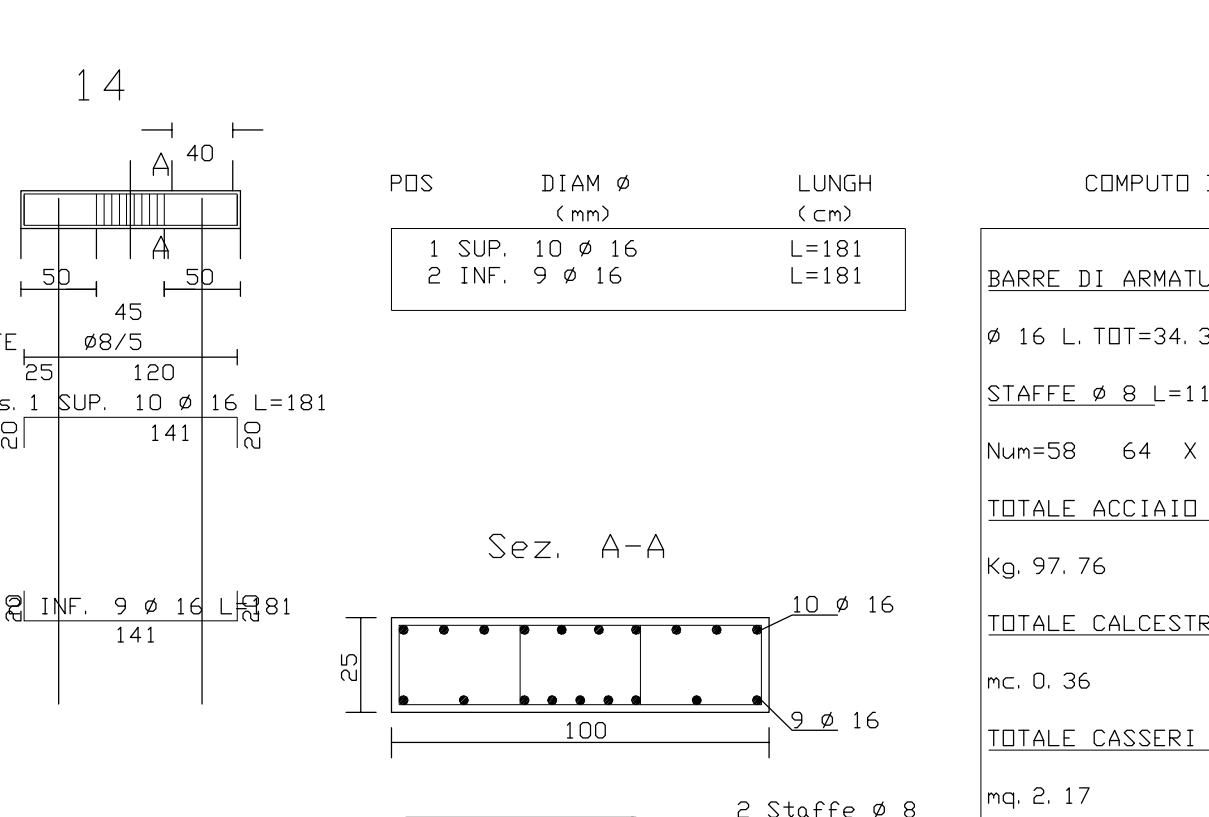


COMPUTO DEI MATERIALI

POS.	DIAM. #	LUNGH. (cm)
1 SUP. 6 # 16	L=1086	
2 INF. 5 # 16	L=1086	
3 INF. 5 # 16	L=1086	
4 INF. 5 # 16	L=1086	
5 INF. 5 # 16	L=1086	

POS.	DIAM. #	LUNGH. (cm)
1 SUP. 6 # 16	L=1086	
2 INF. 5 # 16	L=1086	
3 INF. 5 # 16	L=1086	
4 INF. 5 # 16	L=1086	
5 INF. 5 # 16	L=1086	

Impalcato piano interrato14 (20-14)

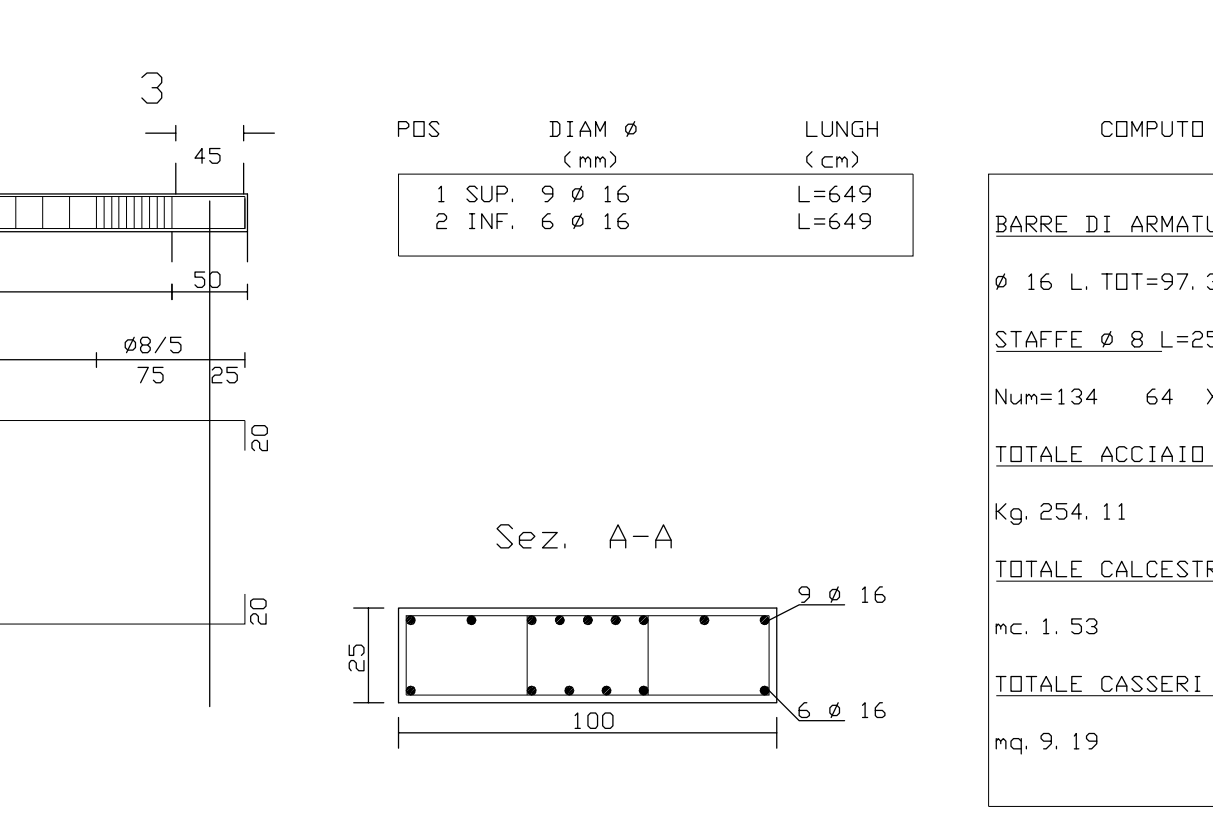


COMPUTO DEI MATERIALI

POS.	DIAM. #	LUNGH. (cm)
1 SUP. 6 # 16	L=1086	
2 INF. 5 # 16	L=1086	
3 INF. 5 # 16	L=1086	
4 INF. 5 # 16	L=1086	
5 INF. 5 # 16	L=1086	

POS.	DIAM. #	LUNGH. (cm)
1 SUP. 6 # 16	L=1086	
2 INF. 5 # 16	L=1086	
3 INF. 5 # 16	L=1086	
4 INF. 5 # 16	L=1086	
5 INF. 5 # 16	L=1086	

Impalcato piano interrato16 (9-3)

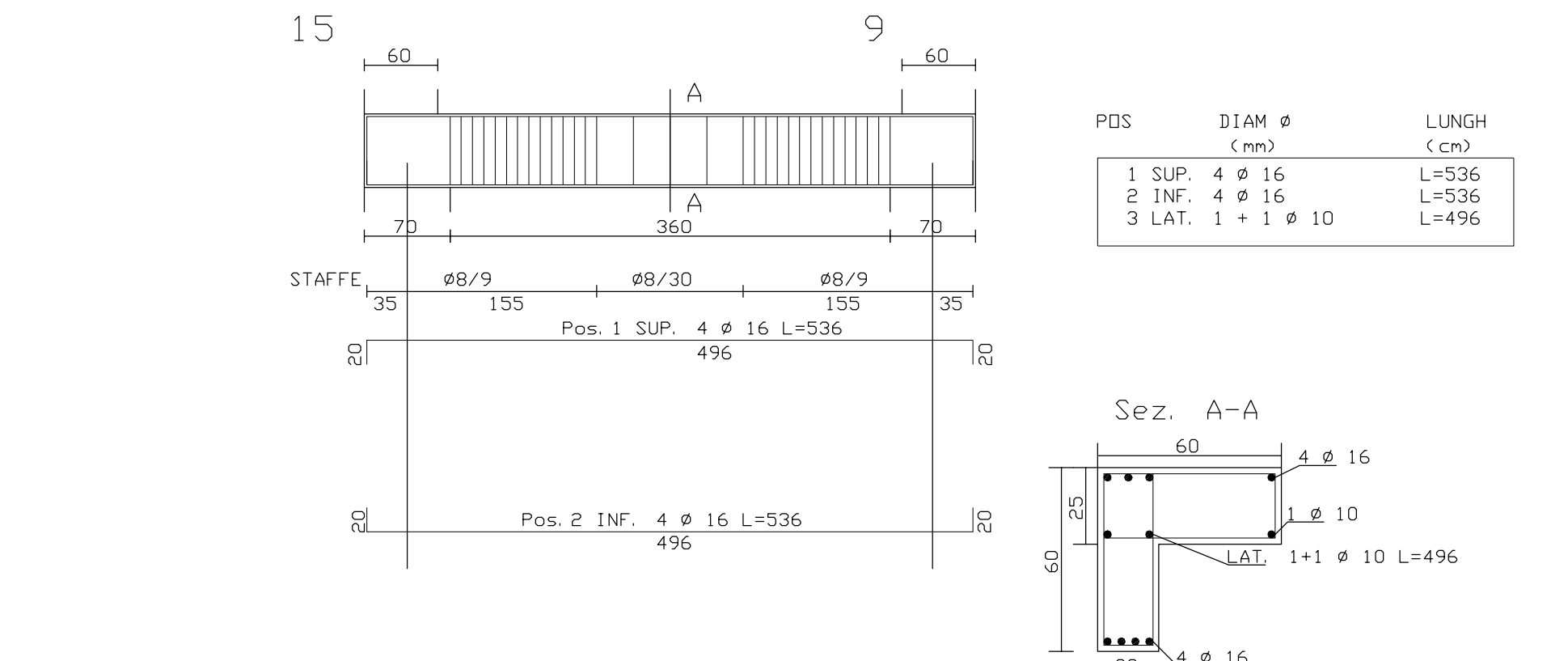


COMPUTO DEI MATERIALI

POS.	DIAM. #	LUNGH. (cm)
1 SUP. 6 # 16	L=1086	
2 INF. 5 # 16	L=1086	
3 INF. 5 # 16	L=1086	
4 INF. 5 # 16	L=1086	
5 INF. 5 # 16	L=1086	

POS.	DIAM. #	LUNGH. (cm)
1 SUP. 6 # 16	L=1086	
2 INF. 5 # 16	L=1086	
3 INF. 5 # 16	L=1086	
4 INF. 5 # 16	L=1086	
5 INF. 5 # 16	L=1086	

Impalcato piano interrato15 (15-9)

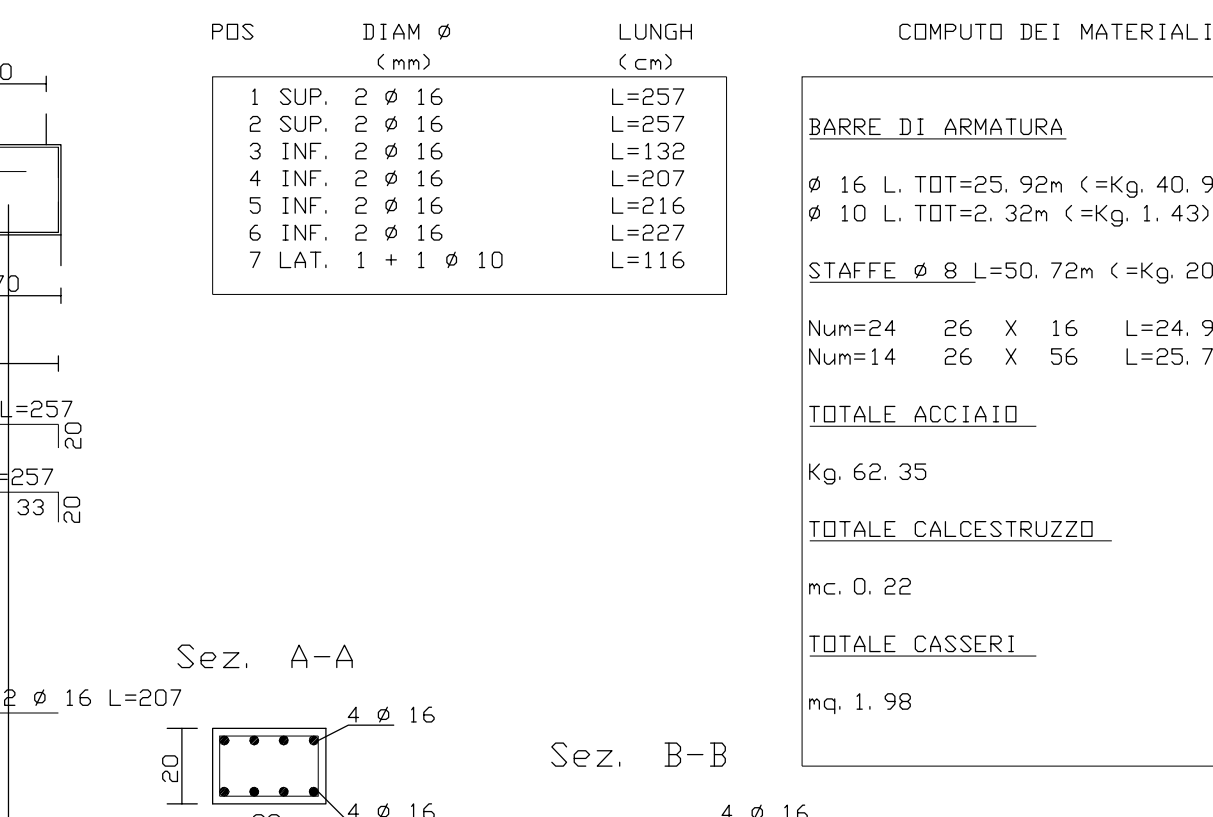


COMPUTO DEI MATERIALI

POS.	DIAM. #	LUNGH. (cm)
1 SUP. 6 # 16	L=1086	
2 INF. 5 # 16	L=1086	
3 INF. 5 # 16	L=1086	
4 INF. 5 # 16	L=1086	
5 INF. 5 # 16	L=1086	

POS.	DIAM. #	LUNGH. (cm)
1 SUP. 6 # 16	L=1086	
2 INF. 5 # 16	L=1086	
3 INF. 5 # 16	L=1086	
4 INF. 5 # 16	L=1086	
5 INF. 5 # 16	L=1086	

Impalcato piano interrato22 (22-21-15)

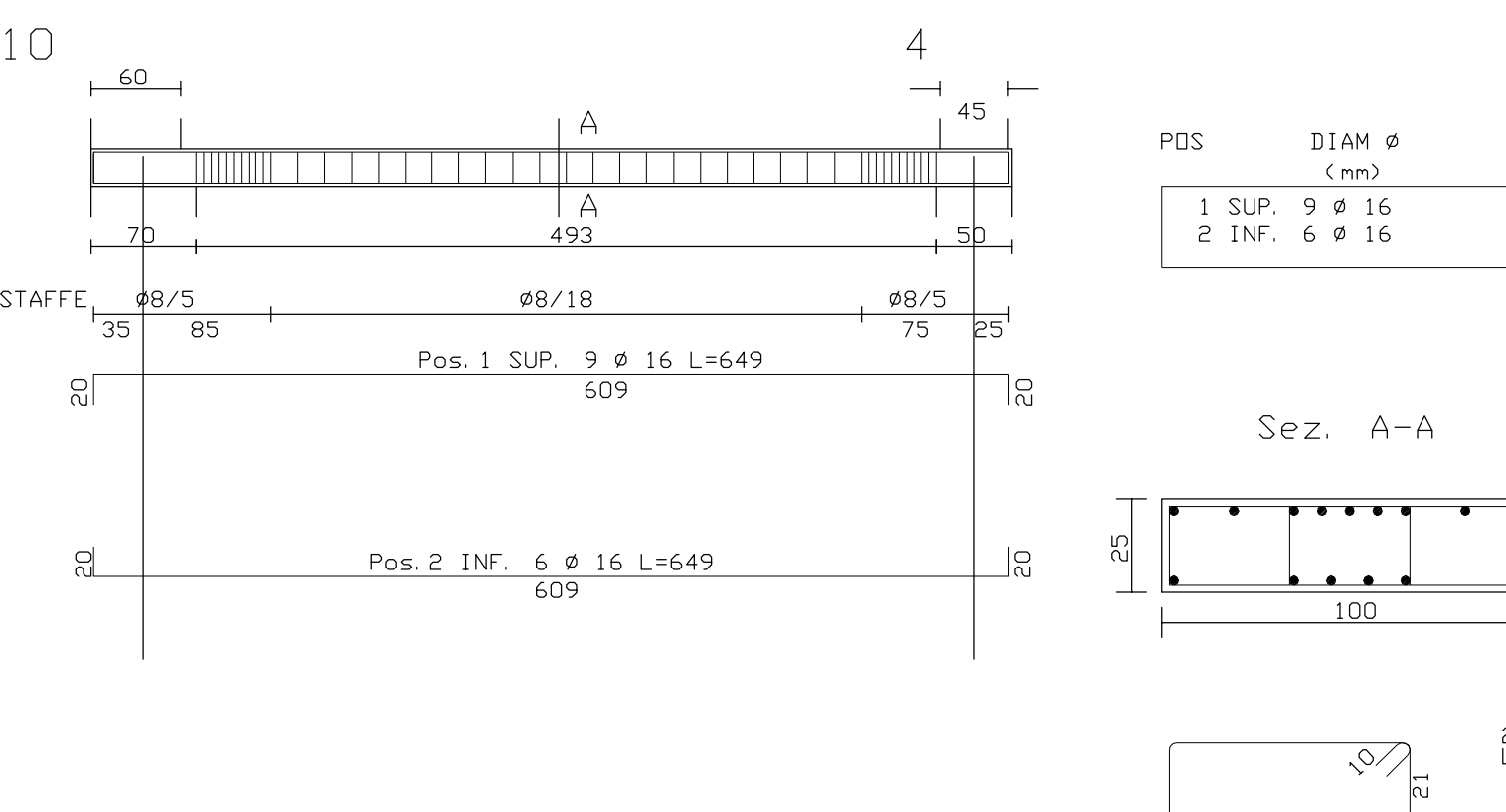


COMPUTO DEI MATERIALI

POS.	DIAM. #	LUNGH. (cm)
1 SUP. 6 # 16	L=1086	
2 INF. 5 # 16	L=1086	
3 INF. 5 # 16	L=1086	
4 INF. 5 # 16	L=1086	
5 INF. 5 # 16	L=1086	

POS.	DIAM. #	LUNGH. (cm)
1 SUP. 6 # 16	L=1086	
2 INF. 5 # 16	L=1086	
3 INF. 5 # 16	L=1086	
4 INF. 5 # 16	L=1086	
5 INF. 5 # 16	L=1086	

Impalcato piano interrato17 (10-4)

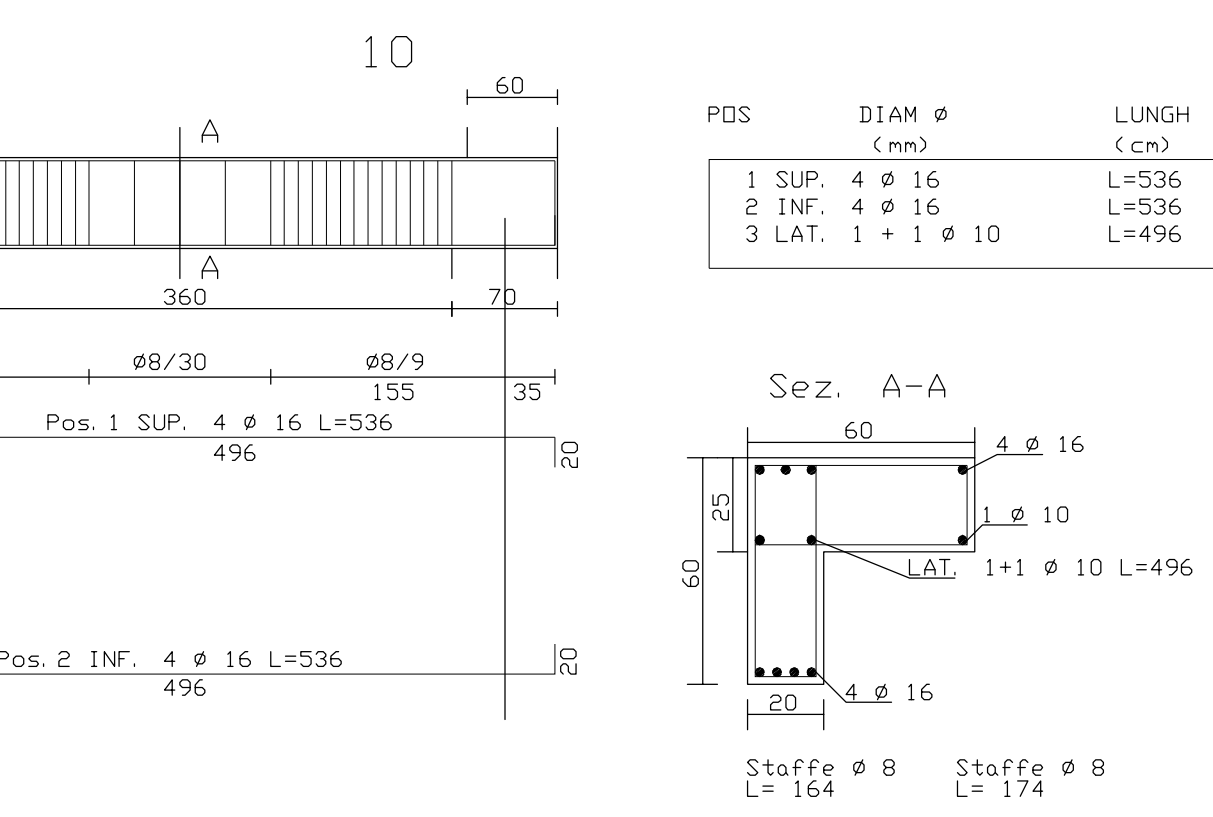


COMPUTO DEI MATERIALI

POS.	DIAM. #	LUNGH. (cm)
1 SUP. 6 # 16	L=1086	
2 INF. 5 # 16	L=1086	
3 INF. 5 # 16	L=1086	
4 INF. 5 # 16	L=1086	
5 INF. 5 # 16	L=1086	

POS.	DIAM. #	LUNGH. (cm)
1 SUP. 6 # 16	L=1086	
2 INF. 5 # 16	L=1086	
3 INF. 5 # 16	L=1086	
4 INF. 5 # 16	L=1086	
5 INF. 5 # 16	L=1086	

Impalcato piano interrato18 (16-10)

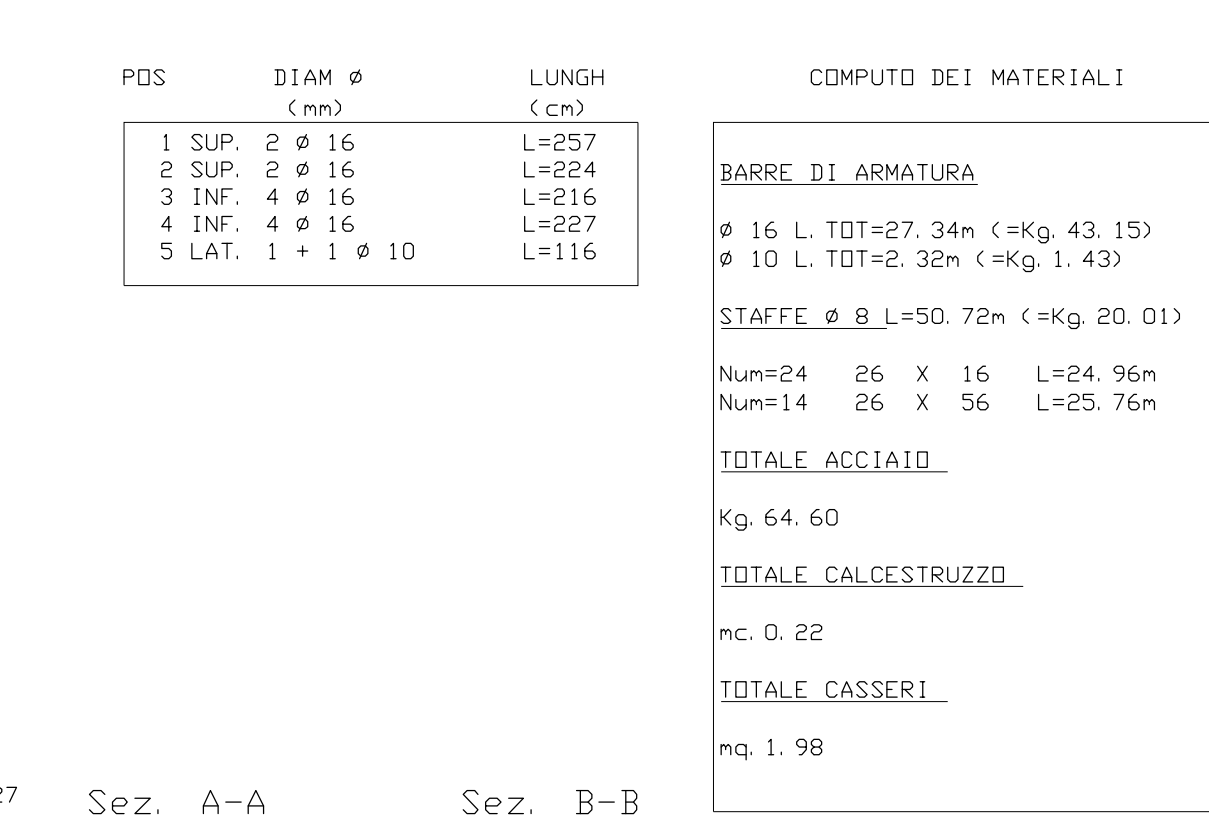


COMPUTO DEI MATERIALI

POS.	DIAM. #	LUNGH. (cm)
1 SUP. 6 # 16	L=1086	
2 INF. 5 # 16	L=1086	
3 INF. 5 # 16	L=1086	
4 INF. 5 # 16	L=1086	
5 INF. 5 # 16	L=1086	

POS.	DIAM. #	LUNGH. (cm)
1 SUP. 6 # 16	L=1086	
2 INF. 5 # 16	L=1086	
3 INF. 5 # 16	L=1086	
4 INF. 5 # 16	L=1086	
5 INF. 5 # 16	L=1086	

Impalcato piano interrato23 (24-23-16)



COMPUTO DEI MATERIALI

Impalcato

Technical drawing of a beam layout (Impalcato) showing dimensions and reinforcement details. The drawing includes a horizontal beam with a total length of 280 units. The beam is divided into three sections: a left section of 40 units, a middle section of 280 units, and a right section of 40 units. The beam is supported by two vertical supports, labeled 17 and 11. The reinforcement details are indicated by arrows and labels: 40/5 (top left), 40/5 (top right), and 40/5 (bottom right). The beam is labeled with 'STAFFE' (Reinforcement Bars) and 'POS. 1 SUP.' (Position 1 Top). The beam is also labeled with '11' and '17' at the supports.